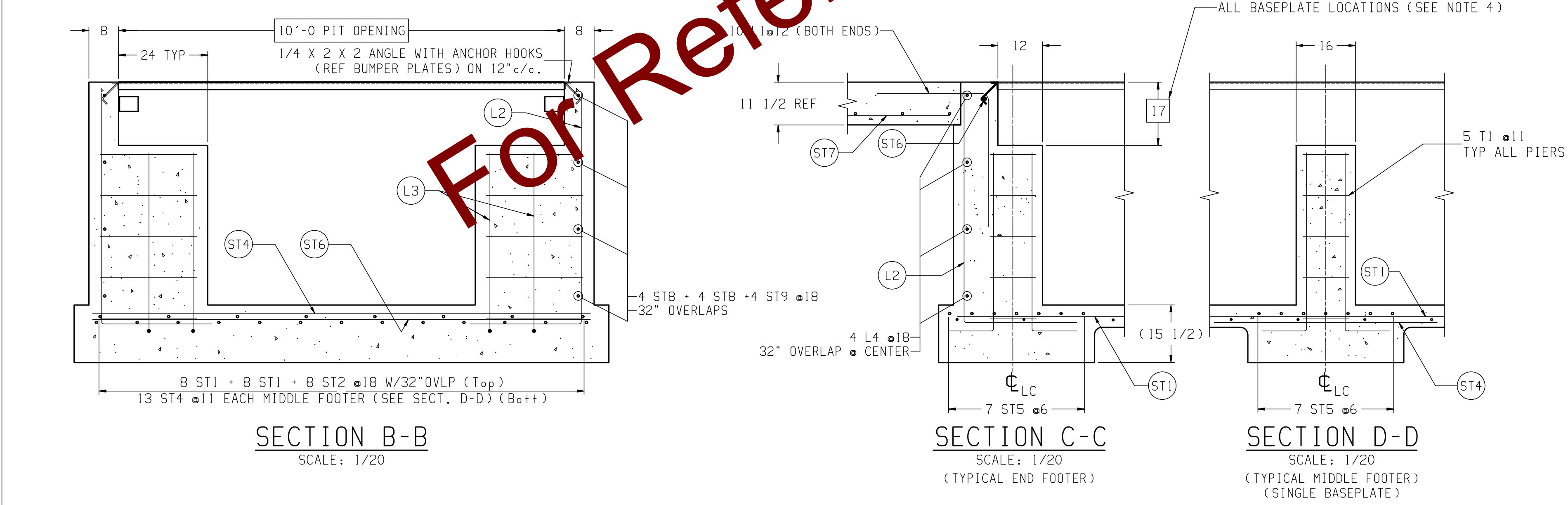


MATERIAL SUMMARY & "Y" DIMENSION CHART	
NOMINAL CLEARANCE BETWEEN FLOOR AND SCALE	4'
CONCRETE (CU. YDS.)	59
REINFORCING STEEL	4130
Y1 (SECTION A-A)	5'-0
Y2 MINIMUM (SECTION A-A)	6'-3 1/2

REINFORCING STEEL SCHEDULE (A.S.T.M. A-615 GRADE 60)						
COLD FORM BARS TO INSIDE DIMENSIONS			A			
SYM	QTY	SIZE	LOCATION, DIRECTION	A	B	WGT
ST1	16	#4	FLOOR, LONG.	40'-0		428
ST2	8	#4	FLOOR, LONG.	5'-6		30
ST3	62	#4	FLOOR, LATERAL	11'-6		477
ST4	39	#4	FOOTERS, LONG.	5'-0		131
ST5	35	#5	FOOTERS, LATERAL	11'-6		420
ST6	20	#5	APPROACH, LATERAL	9'-6		199
	2		END WALLS, LATERAL			20
ST7	20	#5	APPROACH, LONG.	9'-6		199
ST8	16	#4	SIDE WALLS, LONG.	40'-0		428
ST9	8	#4	SIDE WALLS, LONG.	7'-0		38
L1	20	#5	APPROACH TO END TIES	2'-6	3'-0	115
L2	186	#4	WALL TO FLOOR TIES	2'-6	5'-2	953
L3	40	#5	(SEE DETAIL ITEM T1)	1'-0	4'-0	209
L4	16	#4	(CORNERS)	2'-0	7'-4	100
T1	50	#5	(SEE DETAIL ITEM T1)	7'-4		383

- NOTES:**
- 1) USE MINIMUM 3000 PSI STRENGTH CONCRETE AT 28 DAYS WITH 5-7% AIR ENTRAINMENT.
 - 2) USE MINIMUM 60KSI YIELD DEFORMED REINFORCING STEEL. REBAR MINIMUM DEPTH OF COVER SHOULD BE IN ACCORDANCE WITH THE LATEST ACI BUILDING CODE REQUIREMENTS FOR STRUCTURAL CONCRETE (ACI 318-SECTION 7.7), UNLESS OTHERWISE SPECIFIED.
 - 3) FOUNDATION REQUIRES 2000 PSF RATED SOIL.
 - 4) TOP OF CONCRETE AT BASEPLATE LOCATIONS TO BE LEVEL AND IN ONE PLANE $\pm 1/8"$
 - 5) DIAGONAL MEASUREMENTS ENDWALL TO ENDWALL MUST BE EQUAL WITHIN $1/2"$. THIS IS VERY IMPORTANT!! SCALE INSTALLATION WILL BE DIFFICULT IF NOT IMPOSSIBLE IF SQUARENESS IS NOT HELD TO THIS TOLERANCE.
 - 6) BASEPLATE ANCHORS SUPPLIED BY METTLER TOLEDO. USE BASEPLATES AS TEMPLATES TO LOCATE ANCHORS DURING SCALE INSTALLATION.
 - 7) RAMP LENGTH: -PER LOCAL REGULATIONS ($1/2"$ SLOPE PER FOOT TYPICAL)
 - 8) BOTTOM OF FOOTERS MUST BE BELOW LOCAL FROSTLINE.
 - 9) CONTRACTOR SUPPLIES:
 - EXCAVATION
 - CONCRETE AND FORMS
 - REINFORCING STEEL
 - 1 1/2" DIA CONDUIT
 - CURB ANGLE ASSEMBLIES (SECT B-B)
 - BUMPER PLATE ASSEMBLIES (VIEWS J-J & N-N)



REV	CHANGE	BY	DATE	SCALE .02	DATE 10/14/13	METTLER TOLEDO	
A	UPDATED VIEW J-J WITH CORRECT FDN CL DIM	KRS	12/03/13	DRN KRS	APPO ADF		
TITLE						VTSIOX FND PIT 80x9-10	
UNLESS OTHERWISE SPECIFIED, ALL DIMENSIONS ARE IN INCHES, AND DIMENSIONAL TOLERANCES ARE:						THIS PRINT IS FURNISHED WITH THE UNDERSTANDING THAT THE ESSENCE THEREOF WILL NOT BE REPRODUCED IN WHOLE OR IN PART WITHOUT WRITTEN AUTHORIZATION OF METTLER TOLEDO, LLC. ALL DESIGNS ARE THE PROPERTY OF METTLER TOLEDO, LLC, AND WILL BE PROTECTED BY PATENTS.	
FRACTIONAL .XX $\pm .02$						ANGULAR $\pm .5^\circ$	
						61807482	
						REV A	